

C O N N E C T I O N



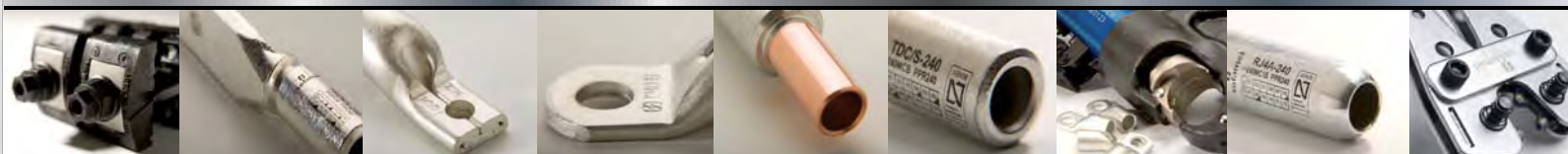
**sofamel**

*safety & connection*



# sofamel

MANUFACTURER OF CONNECTION AND SAFETY MATERIAL



BARCELONA - SPAIN

[www.sofamel.com](http://www.sofamel.com)

# Copper connectors



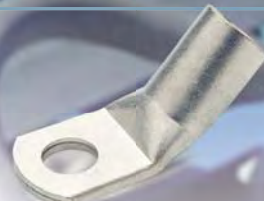
**Copper cable lug**

Mod. T



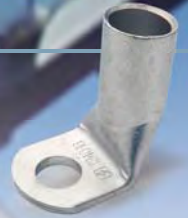
**Copper cable lug long barrel**

Mod. TL



**Copper cable lug 45°**

Mod. T45°



**Copper cable lug 90°**

Mod. T90°



**NF C20-130 copper cable lug**

Mod. TT



**Copper cable lug narrow palm**

Mod. TPE



**Pin terminal**

Mod. CP



**Copper cable lug with 4 holes palm**

Mod. T-4H



**Copper cable lug with 2 holes palm**

Mod. TDT



**Soldered copper cable lug**

Mod. TD



**Copper butt-connector**

Mod. M



**Medium voltage copper joint**

Mod. RJU



**DIN 46235 copper cable lug**

Mod. TCD



**DIN 46267 copper butt-connector**

Mod. MCD

# Aluminium connectors



**Tinned aluminium cable lug**

Mod. TBE



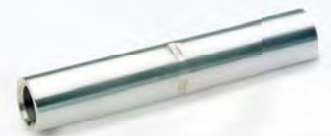
**Tinned aluminium cable lug long barrel**

Mod. TBES



**Tinned bimetallic cable lug**

Mod. TBEM/S



**Aluminium butt-connector**

Mod. MAL



**Low voltage aluminium joint**

Mod. BT



**Reducer low voltage aluminium joint**

Mod. RBT



**Multi-voltage aluminium joint**

Mod. RJA



**Reducer multi-voltage aluminium joint**

Mod. RJA

## Bimetallic connectors



**Shear head bolt cable lug**

Mod. TTG



**Shear head bolt cable lug**

Mod. TTG



**Shear head bolt connector**

Mod. MTG



**Bimetallic cable lug**

Mod. TDC/S



**Bimetallic cable lug**

Mod. TDC/A



**Bimetallic cable lug (Welding)**

Mod. TBF



**Low voltage bimetallic joint**

Mod. MBI



**Medium voltage bimetallic joint**

Mod. RJAU

## Compression and mechanical clamps



**Copper compression clamp**

Mod. CRC



**Bimetallic compression clamp**

Mod. CRS



**Bimetallic mechanical clamp**

Mod. LB



**Copper split-bolt connector**

Mod. APC

## Earthing rods and accessories



**Earthing rod clamp**

Mod. TGT142



**Reinforced earthing rod clamp**

Mod. TGT142 RF



**Earthing clamp**

Mod. GTR-50/150



**Copper parallel earthing clamp**

Mod. TRP

## Setscrew connectors



**Setscrew joint straight entry**

Mod. TR



**Setscrew joint 90° entry**

Mod. TRE



**Setscrew joint**

Mod. TRM



**Tap setscrew joint**

Mod. TRT

## Studded clamps



*Polyamide one-pole strip block*

Mod. BUS



*Polyamide ten-poles strip block*

Mod. ADRI



*Terminal strip*

Mod. EKL

## Cord end terminals



*Cord end terminal*

Mod. APF



*Cord end terminal*

Mod. APF/L



*Twin cord end terminal*

Mod. APF/D



*Non-insulated cord end terminal*

Mod. PF



*Insulated ring terminal*

Mod. AT



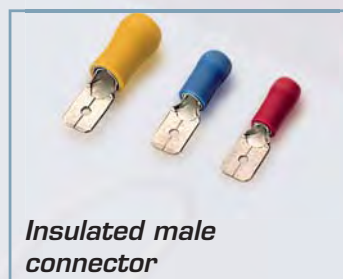
*Insulated fork terminal*

Mod. AU



*Insulated female connector*

Mod. AFH



*Insulated male connector*

Mod. AFM



*Insulated butt-connector*

Mod. AML



*Insulated pin terminal*

Mod. AP



*Fully insulated female connector*

Mod. AFH/A



*Insulated male bullet terminal*

Mod. ACM

Visit and download all products on:

[www.sofamel.com](http://www.sofamel.com)

+34 93 808 79 80 - [export@sofamel.es](mailto:export@sofamel.es)

[www.sofamel.com](http://www.sofamel.com)

# sofamel

# sofamel

TOOLS

## Cable cutters



Mod. SF-21



Mod. SF-31



Mod. SF-24



Mod. SF-13



Mod. SF-20

## Crimping tools for non insulated terminals



Mod. SF-18



Mod. SF-12



Mod. SF-52



Mod. SF-36



Mod. SF-41

## Crimping tools for cord end terminals, cable ties, wire and cable strippers



Mod. SF-6



Mod. SF-58



Mod. SF-39



Mod. SF-22



Mod. SF-38



Mod. SF-42

# sofamel

TOOLS

## Hydraulic crimping tools



Mod. HPS-50



Mod. HPS-130-C3



Mod. HPS-130-H3

## Electrohydraulic crimping tools

Mod. API-60-1



Mod. API-130-H



Mod. API-130-C3



## Hydraulic heads

Mod. PP-130-C



Mod. PP-60-1



Mod. PP-230



Mod. PP-130-H

